



North

K

J

I

H

G

F

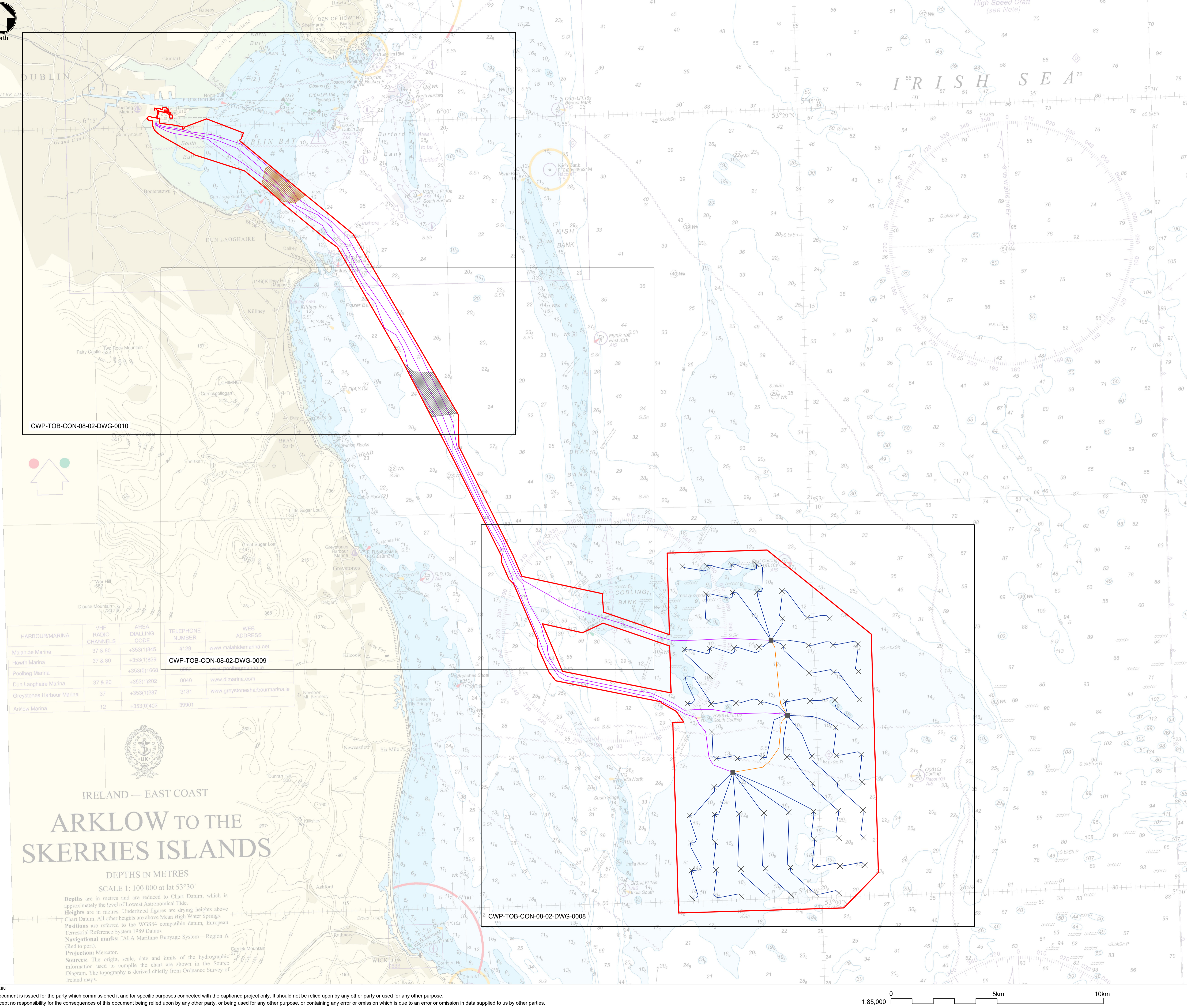
E

D

C

B

A



- Notes
1. Admiralty chart reproduced under licence Number; 37059.  
© Crown Copyright and/or database rights. Reproduced by permission of The Keeper of Public Records and the UK Hydrographic Office (www.ukho.gov.uk/copyright).
  2. Admiralty sheet number: 1468; Tile: Ireland - East Coast, Arklow to the Skerries Islands.
  3. For planning purposes only – not for construction.
  4. The offshore project datum is LAT, referring to Lowest Astronomical Tide.
  5. Background admiralty charts are provided for geographical location purposes only, design will be based on detailed bathymetry survey to determine accurate water depths - not for navigation.

Key to Symbols

Project Boundaries

Planning Application Boundary

Offshore Infrastructure (preferred locations and alignments)

- Wind Turbine Generator (WTG)
- Offshore Substation Structure (OSS)
- Inter-array Cable (IAC) (preferred alignments)
- Interconnector Cable (preferred alignments)
- Offshore Export Cable (preferred alignments)
- East of Dun Laoghaire Harbour Zone of Deeper Burial Depth
- Dublin Array OWF Export Cable Crossing Zone

Note:  
Maritime Area Consent (MAC), omitted from this drawing.  
For Maritime Area Consent (MAC), refer to drawings:  
CWP-TOB-CON-08-02-DWG-0001 and CWP-TOB-CON-08-02-DWG-0006.

Limits of Deviation (LoDs), omitted from this drawing.  
For LoDs refer to Drg. No's: CWP-TOB-CON-08-02-DWG-0008 - 0010.

Safety, Health and Environmental Information

References

A	21/08/24	Planning Issue	MN	MN	DM
Rev	Date	Description	Drawn	Ch'kd	App'd



Client

**CODLING WIND PARK**

Title

**OFFSHORE SITE LAYOUT  
MASTER PLAN  
Option A (75 WTGs)**

Scale at A1	Status	Rev	Security
1:85,000	Planning	A	STD

TOBIN Drawing Number  
**CWP-TOB-CON-08-02-DWG-0007**

© TOBIN  
This document is issued for the party which commissioned it and for specific purposes connected with the captioned project only. It should not be relied upon by any other party or used for any other purpose.  
We accept no responsibility for the consequences of this document being relied upon by any other party, or being used for any other purpose, or containing any error or omission which is due to an error or omission in data supplied to us by other parties.